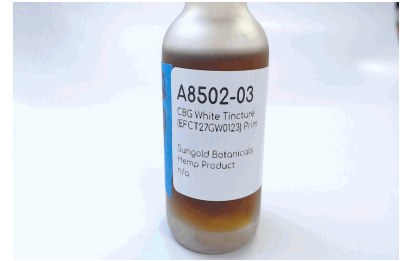


PREE Laboratories - North  
14625 SE 82nd Dr. Suite A, Clackamas, OR 97015  
503-954-2562 / OLCC 010-10219583711 / www.PREELab.com

**CBG White Tincture (EFCT27GW0123)**

*SunGold Botanicals*  
*AG-R1057703IHH*



**Confident Cannabis ID:** 2301ELP0066.0343

**Sample ID:** P230076-03

**Matrix:** Tincture

**METRC Batch #:**

**Batch ID:** EFCT27GW0123

**Sampling Method/SOP:** FSOP #101

**Batch Size:** 200

**Date Sampled:** 01/26/23 14:00

**Unit for Sale:** 30mL Bottle

**Date Accepted:** 01/30/23

**Harvest/Production Date:**

**Harvest/Process Lot ID:** EFCT27GW0123

**Cannabinoid Analysis**

Date/Time Extracted: 01/31/23 15:28

Analysis Method/SOP: S.O.P.T.40.023

Date/Time Analyzed: 02/01/23 01:09

Sample mass: 29g / 30mL Bottle

Cannabinoids	LOQ(%)	mg/g	mg/unit	Cannabinoid Profile
<b>Total THC</b> ((THCA*0.877)+Δ9THC)		<b>&lt; LOQ</b>	<b>&lt; LOQ</b>	
<b>Total CBD</b> ((CBDA*0.877)+CBD)		<b>0.430</b>	<b>12.5</b>	
<b>CBG</b>		<b>38.0</b>	<b>1100</b>	
THCA	0.010	< LOQ	< LOQ	
delta 9-THC	0.010	< LOQ	< LOQ	
delta 8-THC	0.010	< LOQ	< LOQ	
THCV	0.010	< LOQ	< LOQ	
CBGA	0.010	< LOQ	< LOQ	
CBDA	0.010	< LOQ	< LOQ	
CBD	0.010	0.430	12.5	
CBDV	0.010	< LOQ	< LOQ	
CBN	0.010	< LOQ	< LOQ	
CBC	0.010	0.670	19.4	
THCV-A	0.010	< LOQ	< LOQ	
CBDV-A	0.010	< LOQ	< LOQ	
CBCA	0.010	< LOQ	< LOQ	
CBL	0.010	< LOQ	< LOQ	
Sum of tested Cannabinoids	0.010	39.1	1130	

"Total THC" and "Total CBD" are calculated values and are an Oregon reporting requirement (OAR 333-064-0100). For Cannabinoid analysis, only delta 9-THC, delta 8-THC, THCA, CBD, CBDA are ORELAP accredited analytes. Cannabinoid values reported for plant matter are dry weight corrected; Oregon Water Activity action level is 0.65Aw and Oregon Moisture Content action level is 15%, Samples above limit will be highlighted **RED**; FD = Field Duplicate; LOQ = Limit of Quantitation.

Kawai Medeiros  
Lab Director - 2/2/2023

PREE Laboratories - North  
14625 SE 82nd Dr. Suite A, Clackamas, OR 97015  
503-954-2562 / OLCC 010-10219583711 / www.PREElab.com

**Potency Field Duplicate Report:**

Primary Sample Name/ID: CBG White Tincture (EFCT27GW0123) **P230076-03**

Field Duplicate Name/ID: CBG White Tincture (EFCT27GW0123) **P230076-04**

Sample Metrc ID: NA

	Primary mg/unit	Duplicate mg/unit	Average mg/unit	% RPD	Pass/Fail
<b>Total THC ((THCA*0.877)+Δ9THC)</b>	< LOQ	< LOQ	NA	NA	PASS
<b>Total CBD ((CBDA*0.877)+CBD)</b>	12.5	11.0	11.75	12.77	NA
THCA	< LOQ	< LOQ	NA	NA	NA
delta 9-THC	< LOQ	< LOQ	NA	NA	NA
delta 8-THC	< LOQ	< LOQ	NA	NA	PASS
THCV-A	< LOQ	< LOQ	NA	NA	NA
THCV	< LOQ	< LOQ	NA	NA	NA
CBDA	< LOQ	< LOQ	NA	NA	NA
CBD	12.5	11.0	11.75	12.77	NA
CBDV-A	< LOQ	< LOQ	NA	NA	NA
CBDV	< LOQ	< LOQ	NA	NA	NA
CBG	1100	1100	1100	0.00	NA
CBGA	< LOQ	< LOQ	NA	NA	NA
CBN	< LOQ	< LOQ	NA	NA	NA
CBCA	< LOQ	< LOQ	NA	NA	NA
CBC	19.4	18.3	18.85	5.84	NA
CBL	< LOQ	< LOQ	NA	NA	NA
Sum of tested Cannabinoids	1130	1130	1130	0.00	NA



Kawai Medeiros  
Lab Director - 2/2/2023

PREE Laboratories - North  
14625 SE 82nd Dr. Suite A, Clackamas, OR 97015  
503-954-2562 / OLCC 010-10219583711 / www.PREElab.com

**FOR INFORMATIONAL USE ONLY - NOT FOR REGULATORY PURPOSES**

<b>CBG White Tincture (EFCT27GW0123)</b>		Date Sampled: 01/26/23 14:00
<b>SunGold Botanicals</b>		Date Accepted: 01/30/23
<b>AG-R1057703IHH</b>		Batch ID: EFCT27GW0123
Sample ID: P230076-03	METRC Batch #:	Batch Size: 200
Matrix: Tincture		Sampling Method/SOP: SOP.T.20.010

**Terpene Analysis**

Date/Time Extracted: 02/01/23 09:15

Analysis Method/SOP: SOP.T.40.092

Date/Time Analyzed: 02/01/23 15:57

Analyte	LOQ (mg/g)	Mass (mg/g)	Mass (%)	Analyte	LOQ (mg/g)	Mass (mg/g)	Mass (%)
alpha-Pinene	0.020	< LOQ	< LOQ	beta-Pinene	0.020	< LOQ	< LOQ
Camphene	0.020	< LOQ	< LOQ	Sabinene	0.020	< LOQ	< LOQ
Sabinene hydrate	0.020	< LOQ	< LOQ	beta-Myrcene	0.020	< LOQ	< LOQ
p-Mentha-1,5-diene	0.020	< LOQ	< LOQ	(+)-3-Carene	0.020	< LOQ	< LOQ
alpha-Terpinene	0.020	< LOQ	< LOQ	gamma-Terpinene	0.020	< LOQ	< LOQ
Limonene	0.020	< LOQ	< LOQ	Eucalyptol	0.020	< LOQ	< LOQ
Guaiol	0.020	0.174	0.0174	Terpinolene	0.020	< LOQ	< LOQ
Linalool	0.020	< LOQ	< LOQ	Camphor	0.020	< LOQ	< LOQ
(+)-Camphor	0.020	< LOQ	< LOQ	(-)-Camphor	0.020	< LOQ	< LOQ
Isopulegol	0.020	< LOQ	< LOQ	Isoborneol	0.020	< LOQ	< LOQ
Borneol	0.020	< LOQ	< LOQ	Hexahydrothymol	0.020	< LOQ	< LOQ
Geraniol	0.020	< LOQ	< LOQ	(+)-Pulegone	0.020	< LOQ	< LOQ
Nerol	0.020	< LOQ	< LOQ	cis-Nerolidol	0.020	< LOQ	< LOQ
trans-Nerolidol	0.020	< LOQ	< LOQ	Geranyl acetate	0.020	< LOQ	< LOQ
alpha-Cedrene	0.020	< LOQ	< LOQ	trans-Caryophyllene	0.020	0.091	0.0091
Caryophyllene Oxide	0.020	< LOQ	< LOQ	alpha-Humulene	0.020	< LOQ	< LOQ
Valencene	0.020	< LOQ	< LOQ	alpha-Farnesene	0.020	< LOQ	< LOQ
beta-Farnesene	0.020	< LOQ	< LOQ	Cedrol	0.020	< LOQ	< LOQ
alpha-Bisabolol	0.020	0.259	0.0259	Fenchone	0.020	< LOQ	< LOQ
Fenchyl Alcohol	0.020	< LOQ	< LOQ	trans, beta- Ocimene	0.020	< LOQ	< LOQ
beta, cis- Ocimene	0.020	< LOQ	< LOQ	Terpineol	0.020	< LOQ	< LOQ
Total (Sum):						0.52	0.05

Analysis performed on GCMS with confirmation ion identification. Terpene analysis is not ORELAP accredited.  
Results reported as wet weight, or "as is." LOQ = Limit of Quantitation



Kawai Medeiros  
Lab Director - 2/2/2023

PREE Laboratories - North  
14625 SE 82nd Dr. Suite A, Clackamas, OR 97015  
503-954-2562 / OLCC 010-10219583711 / www.PREELab.com

**CBG White Tincture (EFCT27GW012)**

SunGold Botanicals

AG-R1057703IHH

Sample ID: P230076-03

Matrix: Tincture

METRC Batch Package #:

Date Sampled: 01/26/23 14:00

Date Accepted: 01/30/23 13:03

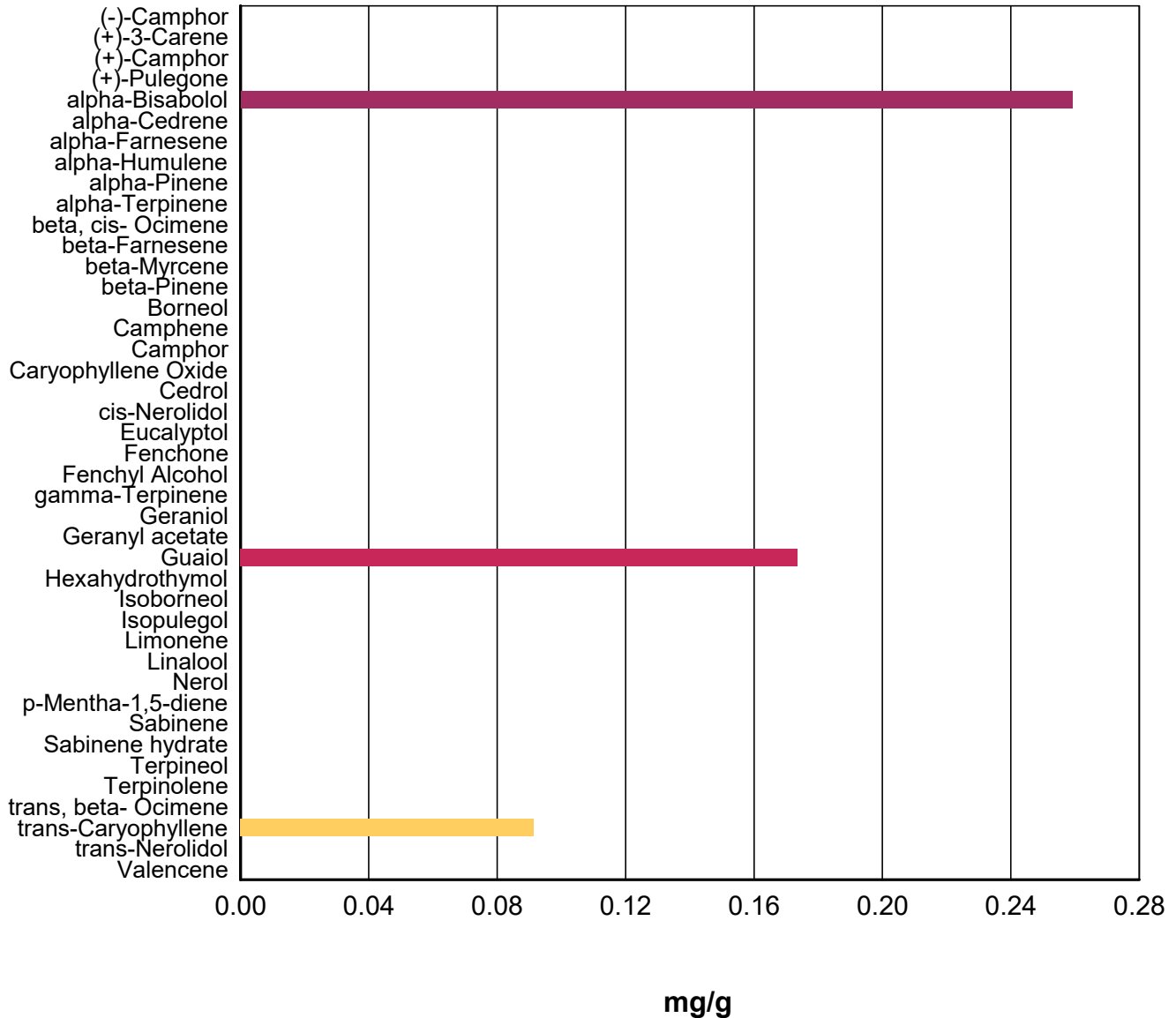
Results Valid Until: 01/26/24

Batch ID: EFCT27GW0123

Batch Size: 200

Sampling Method/SOP: SOP.T.20.010

**Terpene Profile**



*Kawai Medeiros*

Kawai Medeiros  
Lab Director - 2/2/2023

PREE Laboratories - North  
14625 SE 82nd Dr. Suite A, Clackamas, OR 97015  
503-954-2562 / OLCC 010-10219583711 / www.PREELab.com

**Quality Control**

**Batch: P23A097 - SOP.T.30.050PDX Prep for Cannabinoids**

Blank(P23A097-BLK1)			Extracted: 01/31/23 15:28		Analyzed: 01/31/23 23:52		
Analyte	Result	LOQ	Recovery Limits	Analyte	Result	LOQ	Recovery Limits
THCA	< LOQ	0.010 (%)	< LOQ	delta 9-THC	< LOQ	0.010 (%)	< LOQ
delta 8-THC	< LOQ	0.010 (%)	< LOQ	THCV-A	< LOQ	0.010 (%)	< LOQ
THCV	< LOQ	0.010 (%)	< LOQ	CBDA	< LOQ	0.010 (%)	< LOQ
CBD	< LOQ	0.010 (%)	< LOQ	CBDV-A	< LOQ	0.010 (%)	< LOQ
CBDV	< LOQ	0.010 (%)	< LOQ	CBG	< LOQ	0.010 (%)	< LOQ
CBGA	< LOQ	0.010 (%)	< LOQ	CBN	< LOQ	0.010 (%)	< LOQ
CBCA	< LOQ	0.010 (%)	< LOQ	CBC	< LOQ	0.010 (%)	< LOQ
CBL	< LOQ	0.010 (%)	< LOQ	Sum of tested Cannabinoid:	< LOQ	0.010 (%)	< LOQ

LCS(P23A097-BS1)			Extracted: 01/31/23 15:28		Analyzed: 02/01/23 00:08		
Analyte	% Recovery	LOQ	Recovery Limits	Analyte	% Recovery	LOQ	Recovery Limits
THCA	99.7	0.010 (%)	90-110	delta 9-THC	104	0.010 (%)	90-110
delta 8-THC	98.5	0.010 (%)	90-110	CBDA	105	0.010 (%)	90-110
CBD	105	0.010 (%)	90-110				

**Batch: P23B004 - SOP.T.40.092 PDX Terpenoid Analysis via GC-MS**

Blank(P23B004-BLK1)			Extracted: 02/01/23 09:15		Analyzed: 02/01/23 14:03		
Analyte	Result	LOQ	Recovery Limits	Analyte	Result	LOQ	Recovery Limits
alpha-Pinene	< LOQ	0.020 (mg/g)	< LOQ	beta-Pinene	< LOQ	0.020 (mg/g)	< LOQ
Camphene	< LOQ	0.020 (mg/g)	< LOQ	Sabinene	< LOQ	0.020 (mg/g)	< LOQ
Sabinene hydrate	< LOQ	0.020 (mg/g)	< LOQ	beta-Myrcene	< LOQ	0.020 (mg/g)	< LOQ
p-Mentha-1,5-diene	< LOQ	0.020 (mg/g)	< LOQ	(+)-3-Carene	< LOQ	0.020 (mg/g)	< LOQ
alpha-Terpinene	< LOQ	0.020 (mg/g)	< LOQ	gamma-Terpinene	< LOQ	0.020 (mg/g)	< LOQ
Limonene	< LOQ	0.020 (mg/g)	< LOQ	Eucalyptol	< LOQ	0.020 (mg/g)	< LOQ
Guaiol	< LOQ	0.020 (mg/g)	< LOQ	Terpinolene	< LOQ	0.020 (mg/g)	< LOQ
Linalool	< LOQ	0.020 (mg/g)	< LOQ	Camphor	< LOQ	0.020 (mg/g)	< LOQ
(+)-Camphor	< LOQ	0.020 (mg/g)	< LOQ	(-)-Camphor	< LOQ	0.020 (mg/g)	< LOQ
Isopulegol	< LOQ	0.020 (mg/g)	< LOQ	Isoborneol	< LOQ	0.020 (mg/g)	< LOQ
Borneol	< LOQ	0.020 (mg/g)	< LOQ	Hexahydrothymol	< LOQ	0.020 (mg/g)	< LOQ
Geraniol	< LOQ	0.020 (mg/g)	< LOQ	(+)-Pulegone	< LOQ	0.020 (mg/g)	< LOQ
Nerol	< LOQ	0.020 (mg/g)	< LOQ	cis-Nerolidol	< LOQ	0.020 (mg/g)	< LOQ
trans-Nerolidol	< LOQ	0.020 (mg/g)	< LOQ	Geranyl acetate	< LOQ	0.020 (mg/g)	< LOQ
alpha-Cedrene	< LOQ	0.020 (mg/g)	< LOQ	trans-Caryophyllene	< LOQ	0.020 (mg/g)	< LOQ
Caryophyllene Oxide	< LOQ	0.020 (mg/g)	< LOQ	alpha-Humulene	< LOQ	0.020 (mg/g)	< LOQ
Valencene	< LOQ	0.020 (mg/g)	< LOQ	alpha-Farnesene	< LOQ	0.020 (mg/g)	< LOQ
beta-Farnesene	< LOQ	0.020 (mg/g)	< LOQ	Cedrol	< LOQ	0.020 (mg/g)	< LOQ
alpha-Bisabolol	< LOQ	0.020 (mg/g)	< LOQ	Fenchone	< LOQ	0.020 (mg/g)	< LOQ



Kawai Medeiros  
Lab Director - 2/2/2023

PREE Laboratories - North  
14625 SE 82nd Dr. Suite A, Clackamas, OR 97015  
503-954-2562 / OLCC 010-10219583711 / www.PREElab.com

**Quality Control**

**Batch: P23B004 - SOP.T.40.092 PDX Terpenoid Analysis via GC-MS (Continued)**

Blank(P23B004-BLK1)			Extracted: 02/01/23 09:15		Analyzed: 02/01/23 14:03		
Analyte	Result	LOQ	Recovery Limits	Analyte	Result	LOQ	Recovery Limits
Fenchyl Alcohol	< LOQ	0.020 (mg/g)	< LOQ	trans, beta- Ocimene	< LOQ	0.020 (mg/g)	< LOQ
beta, cis- Ocimene	< LOQ	0.020 (mg/g)	< LOQ	Terpineol	< LOQ	0.020 (mg/g)	< LOQ



Kawai Medeiros  
Lab Director - 2/2/2023